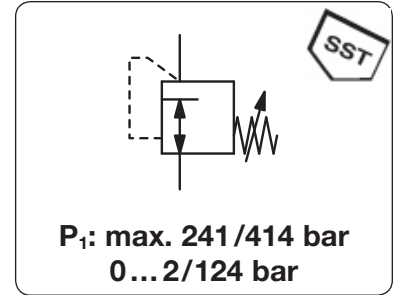


Description	Diaphragm-operated high pressure regulator of small and light design.	
Adjustment	by black plastic knob	
Relieving function	non-relieving	
Gauge port	1/4" NPT for inlet and outlet pressure	
	RH0	RH1
Media	corrosive or non-corrosive gases up to purity 5.0	compressed air, non-corrosive gases or liquids
Supply pressure	max. 241 bar	max. 414 bar
Leakage rate	< 1 x 10 ⁻⁶ mbar l/s He	< 1 x 10 ⁻⁴ mbar l/s He
Temperature range	-40 °C to 60 °C / -40 °F to 140 °F	-25 °C to 75 °C / -13 °F to 167 °F
Body	brass, optionally stainless steel or aluminium	nickel-plated aluminium
Regulating system	diaphragm made of stainless steel	piston with EPDM o-ring, as option NBR/Buna-N or FKM
Valve seat	PFA or CTFE as option	CTFE or Vespel as option
Inner valve	brass, optionally stainless steel	stainless steel and aluminium
		Weight aluminium 200 g, brass 430 g
		Mounting position any



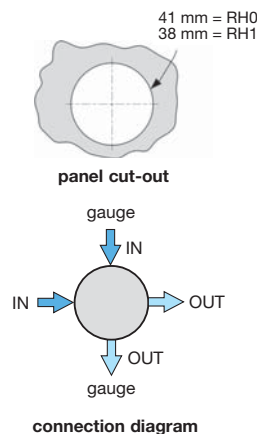
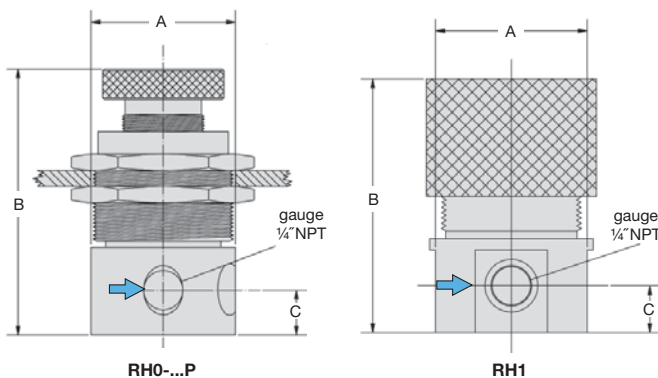
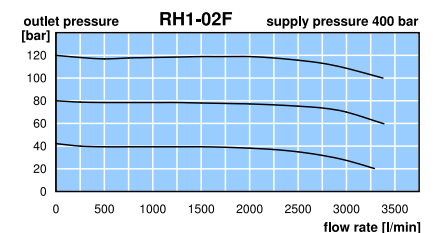
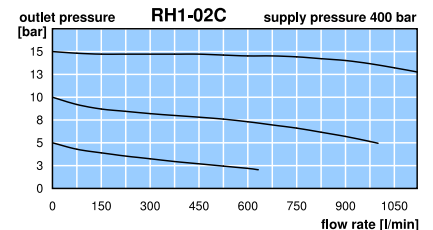
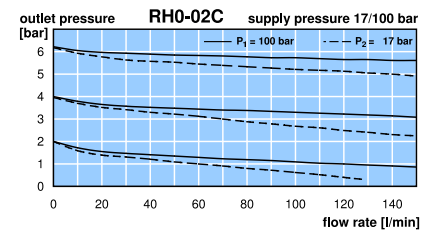
Dimensions			K _v -value (m ³ /h)	Flow rate m ³ /h	l/min	Connection thread NPT	Pressure range bar	Order number
A	B	C						

High pressure regulator 241 bar						for gases, non-relieving brass, stainless steel diaphragm	RH0	
41	82	14	0.05	9*1	150*1	1/4" NPT	0.2 ... 2 0.4 ... 4 0.6 ... 7	RH0-02A RH0-02B RH0-02C

High pressure regulator 414 bar						for gases and liquids, non-relieving aluminium, piston with EPDM	RH1	
41	76	13	0.05	84*2	1400*2	1/4" NPT	0.5 ... 5 0.5 ... 10 1.5 ... 15	RH1-02A RH1-02B RH1-02C
41	76	13	0.05	192*3	3200*3	1/4" NPT	4.0 ... 48 8.0 ... 83 10 ... 124	RH1-02D RH1-02E RH1-02F

Special options, add the appropriate letter

1/8" NPT	connection thread	für RH0	RH0-01.
aluminium body		für RH0	RH0-02. A
stainless steel body		für RH0	RH0-02. S
CTFE seat		für RH0	RH0-02. X52
CTFE seat	for stainless steel body	für RH0	RH0-02. SX52
Vespel seat		für RH1	RH1-02. X45
NBR o-ring		für RH1	RH1-02. N
FKM o-ring		für RH1	RH1-02. V
free of grease and oil	suitable for oxygen,	für RH0	RH0-02. L
for oxygen	especially cleaned,	für RH1	RH1-02. 15
brass pressure gauge	inlet side	outlet side	RH. -02. GM
SST pressure gauge	inlet side	outlet side	RH. -02. G
for panel mounting		für RH0	RH0-02. P



*1 at 100 bar supply pressure and 6 bar outlet pressure
*2 at 400 bar supply pressure and 15 bar outlet pressure
*3 at 400 bar supply pressure and 120 bar outlet pressure